

# TREX SIGNATURE® X-SERIES™ HORIZONTAL CABLE RAIL

## Installation Instructions



### NOTES:

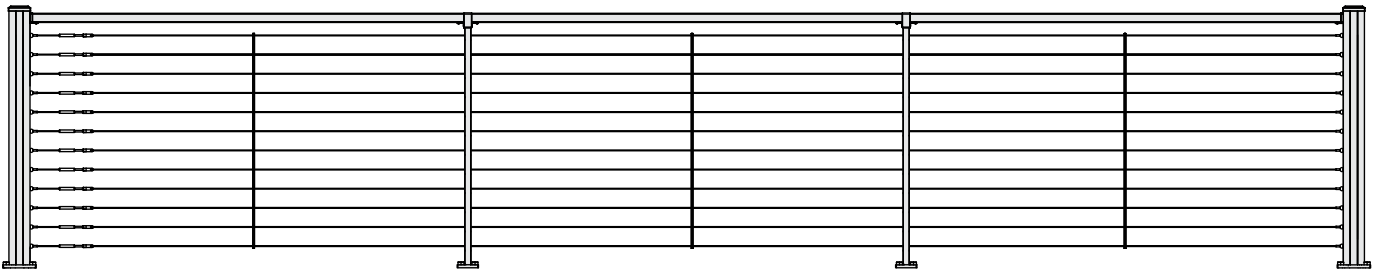
- » PLEASE READ ALL INSTRUCTIONS BEFORE BEGINNING INSTALLATION. USE ALL REQUIRED PARTS WHERE SPECIFIED.
- » X-SERIES HORIZONTAL CABLE RAIL IS ONLY COMPATIBLE WITH X-SERIES ANCHOR POSTS. IT CANNOT BE USED WITH STANDARD SIGNATURE POSTS OR PRESSURE-TREATED POSTS/POST SLEEVES.
- » X-SERIES HORIZONTAL CABLE RAIL IS DESIGNED TO BE INSTALLED AT A MAXIMUM CLEAR SPAN OF 6', 12', OR 18' BETWEEN X-SERIES ANCHOR POSTS. TOP RAILS DO NOT HAVE TO BE CUT FOR FULL-SPAN INSTALLATIONS.
- » X-SERIES ANCHOR POSTS MUST BE USED AT ALL CABLE TERMINATIONS.
- » ONLY X-SERIES ANCHOR POSTS CAN BE USED AT CORNERS. DO NOT USE PASS-THROUGH POSTS AT CORNERS.
- » USE COMPOUND SWIVEL BRACKETS FOR HORIZONTAL ANGLE INSTALLATIONS. REFER TO INSTRUCTIONS FOR ADDITIONAL DETAILS.
- » X-SERIES HORIZONTAL CABLE RAIL CANNOT BE USED WITH TRADITIONAL OR COCKTAIL DESIGNS.
- » REFER TO TREX CARE AND CLEANING GUIDE FOR DETAILED CLEANING RECOMMENDATIONS.

### Tools Required:

- Please wear safety glasses during installation.
- Note that tools are NOT included unless otherwise specified.
- WD-40 Specialist® Corrosion Inhibitor (**RECOMMENDED** for saltwater environments)
- Min 18V drill
- Min 18V impact driver (post install only)
- Tape measure
- 3/4" socket
- Hammer
- Level
- 9/16" drill bit
- 9/64" drill bit (included)
- Cable cutters
- 5/32" Allen wrench
- 3/32" Allen wrench
- 1/8" Allen wrench
- T-20 drive bit
- Cable tension gauge
- Turnbuckle wrench (included)
- Adjustable wrench (if needed)

WD-40 Specialist® Corrosion Inhibitor is a registered trademark of WD-40 Company.

### 18' Horizontal Cable Rail Configuration

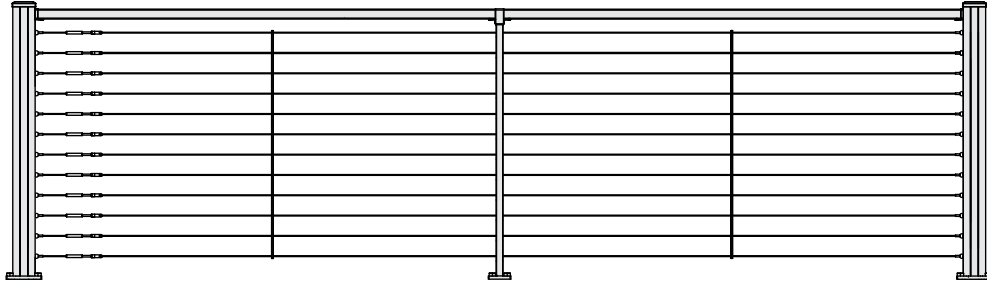


- » (2) X-Series Anchor Posts (sold separately)
- » (3) 6' Top Rails
- » (1) Fixed Horizontal Bracket Pack
  - (2) Top Rail Straight Brackets
  - (1) Screw Pack
  - (2) Top Rail Locking Assemblies
  - (2) Top Inserts
  - (1) 9/64" Drill Bit
- » (2) Pass-Through Posts
- » (2) Pass-Through Post Bracket Packs
  - (1) Pass-Through Post Bracket
  - (1) Barrel Bolt Pack
  - (1) Screw Pack
- » (2) Cable Infill Adapters
- » (3) Cable Braces (w/ set screws included)
- » (1) Turnbuckle Wrench
- » (2) Post Mounting Hardware Packs
  - (4) 1/2" x 6" SS Hex Bolts
  - (4) SS Washers
  - (4) SS Tee Nuts
- » (2) Bolt Cap Packs
  - (4) Inner Caps
  - (4) Outer Caps
- » 18' Cable Assemblies
  - (Qty 10 for 36" height)
  - (Qty 12 for 42" height)

# TREX SIGNATURE® X-SERIES™ HORIZONTAL CABLE RAIL

## Installation Instructions

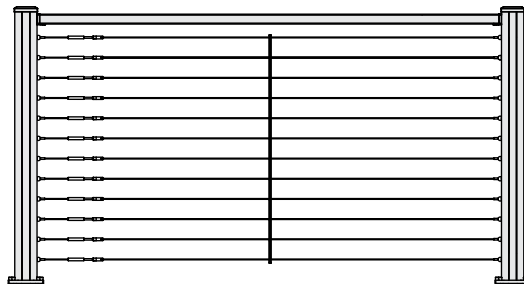
### 12' Horizontal Cable Rail Configuration



- » (2) X-Series Anchor Posts (sold separately)
- » (2) 6' Top Rails
- » (1) Fixed Horizontal Bracket Pack
  - (2) Top Rail Straight Brackets
  - (1) Screw Pack
  - (2) Top Rail Locking Assemblies
  - (2) Top Inserts
  - (1) 9/64" Drill Bit
- » (1) Pass-Through Post
- » (1) Pass-Through Post Bracket Pack
  - (1) Pass-Through Post Bracket
  - (1) Barrel Bolt Pack
  - (1) Screw Pack
- » (2) Cable Infill Adapters
- » (2) Cable Braces (w/ set screws included)
- » (1) Turnbuckle Wrench
- » (1) Post Mounting Hardware Pack
  - (4) 1/2" x 6" SS Hex Bolts
  - (4) SS Washers
  - (4) SS Tee Nuts
- » (1) Bolt Cap Pack
  - (4) Inner Caps
  - (4) Outer Caps
- » 12' Cable Assemblies
  - (Qty 10 for 36" height)
  - (Qty 12 for 42" height)

---

### 6' Horizontal Cable Rail Configuration



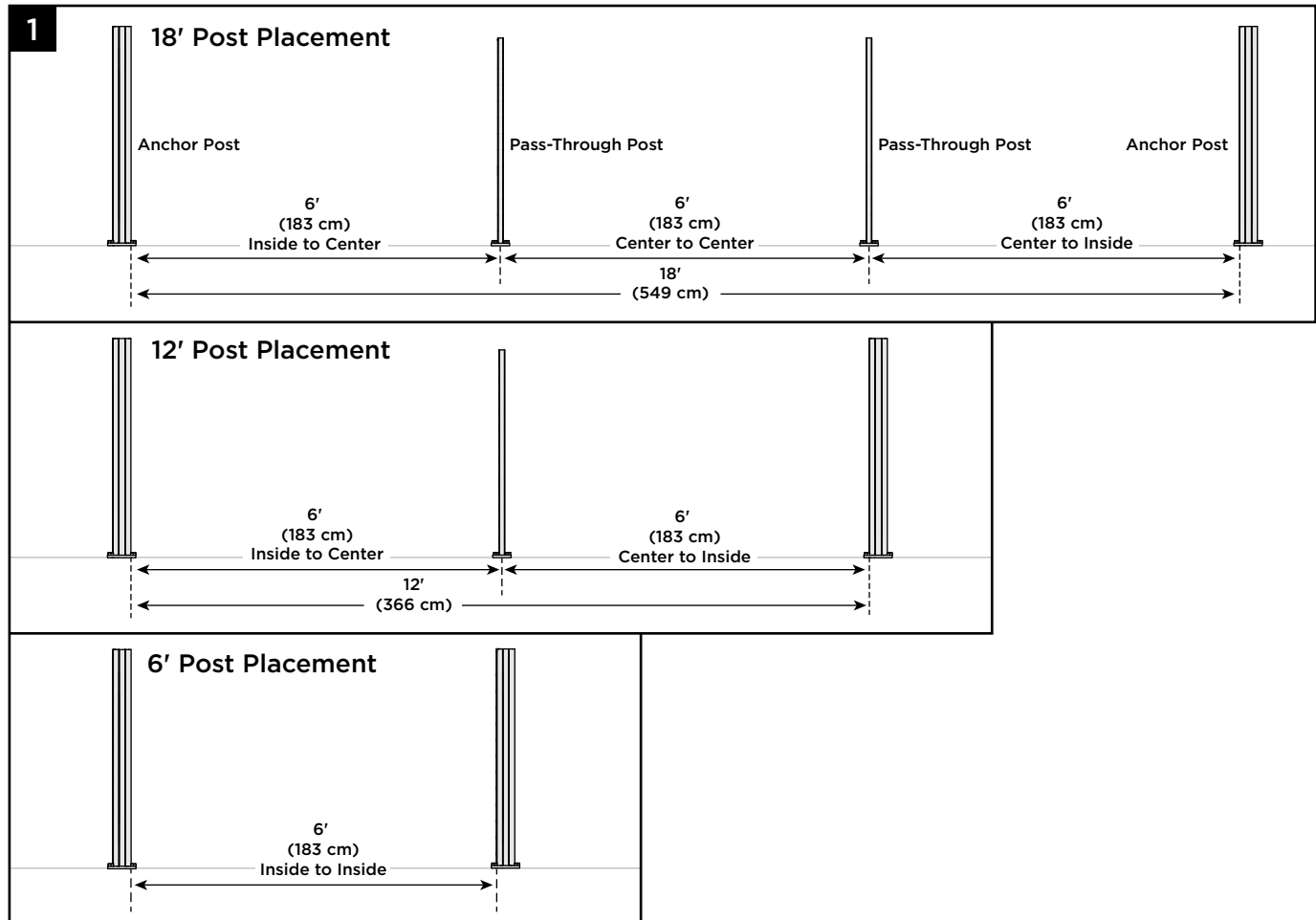
- » (2) X-Series Anchor Posts (sold separately)
- » (1) 6' Top Rail
- » (1) Fixed Horizontal Bracket Pack
  - (2) Top Rail Straight Brackets
  - (1) Screw Pack
  - (2) Top Rail Locking Assemblies
  - (2) Top Inserts
  - (1) 9/64" Drill Bit
- » (2) Cable Infill Adapters
- » (1) Cable Brace (w/ set screws included)
- » (1) Turnbuckle Wrench
- » 6' Cable Assemblies
  - (Qty 10 for 36" height)
  - (Qty 12 for 42" height)

**NOTE:** Install X-Series Anchor Posts as per instructions provided with these posts. Then proceed to instructions below.

## Installing Pass-Through Posts

- » X-Series Horizontal Cable Rail is designed to be installed at a maximum clear span of 6', 12', or 18' between X-Series Anchor Posts.
- » If not installing standard clear spans as listed above, you must first calculate the clear span between X-Series Anchor Posts, then divide accordingly, depending on total overall span.
  - Any span over 6' will require the use of one Pass-Through Post.
  - Any span over 12' will require the use of two Pass-Through Posts.

## Post Placement

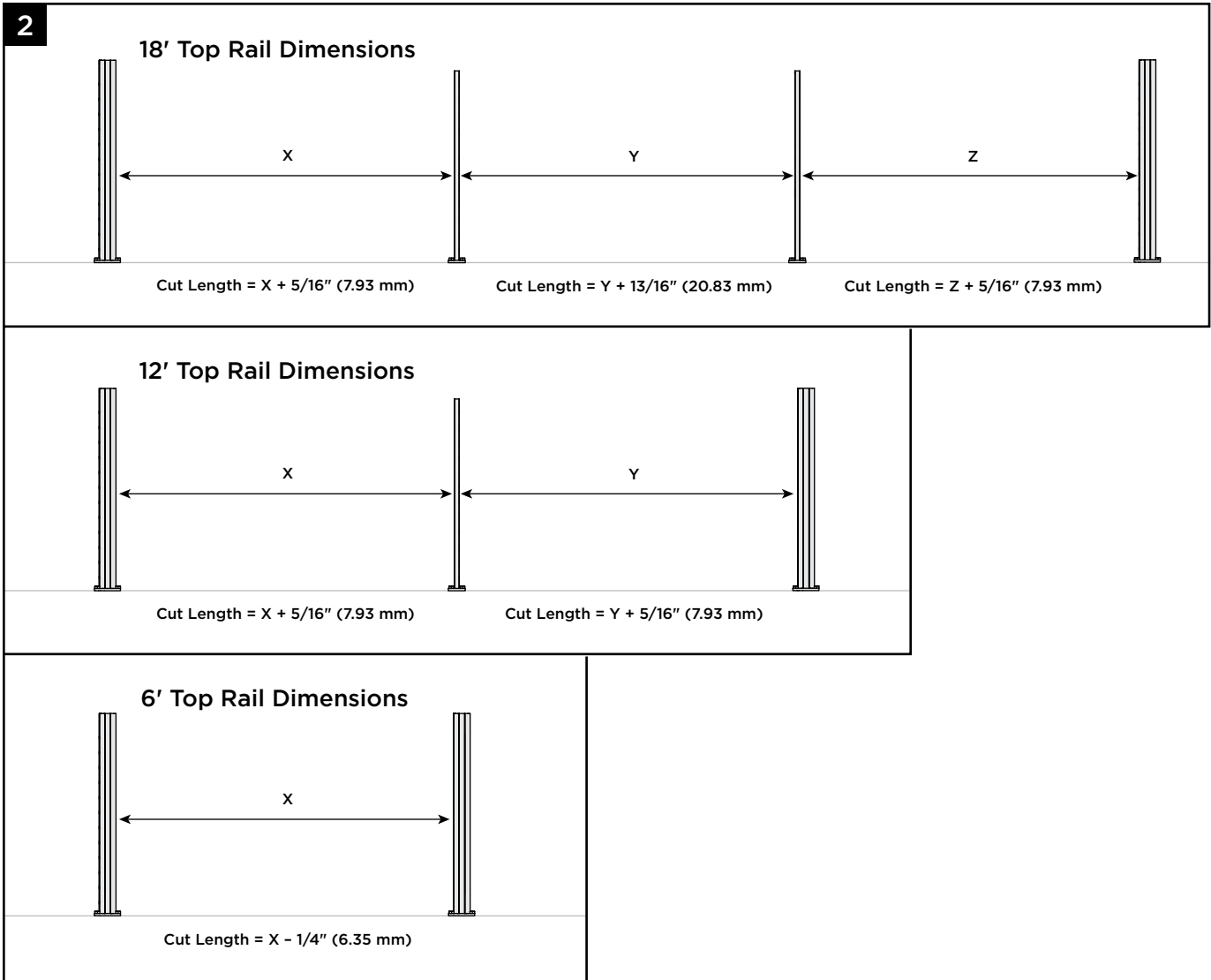


1. Install Pass-Through Posts using mounting hardware provided. When mounting Pass-Through Posts to pressure-treated wood framing, follow the same installation method and blocking details outlined in the Trex Signature X-Series Post installation instructions. Ensure Pass-Through Posts are plumb.

# TREX SIGNATURE® X-SERIES™ HORIZONTAL CABLE RAIL

## Installation Instructions

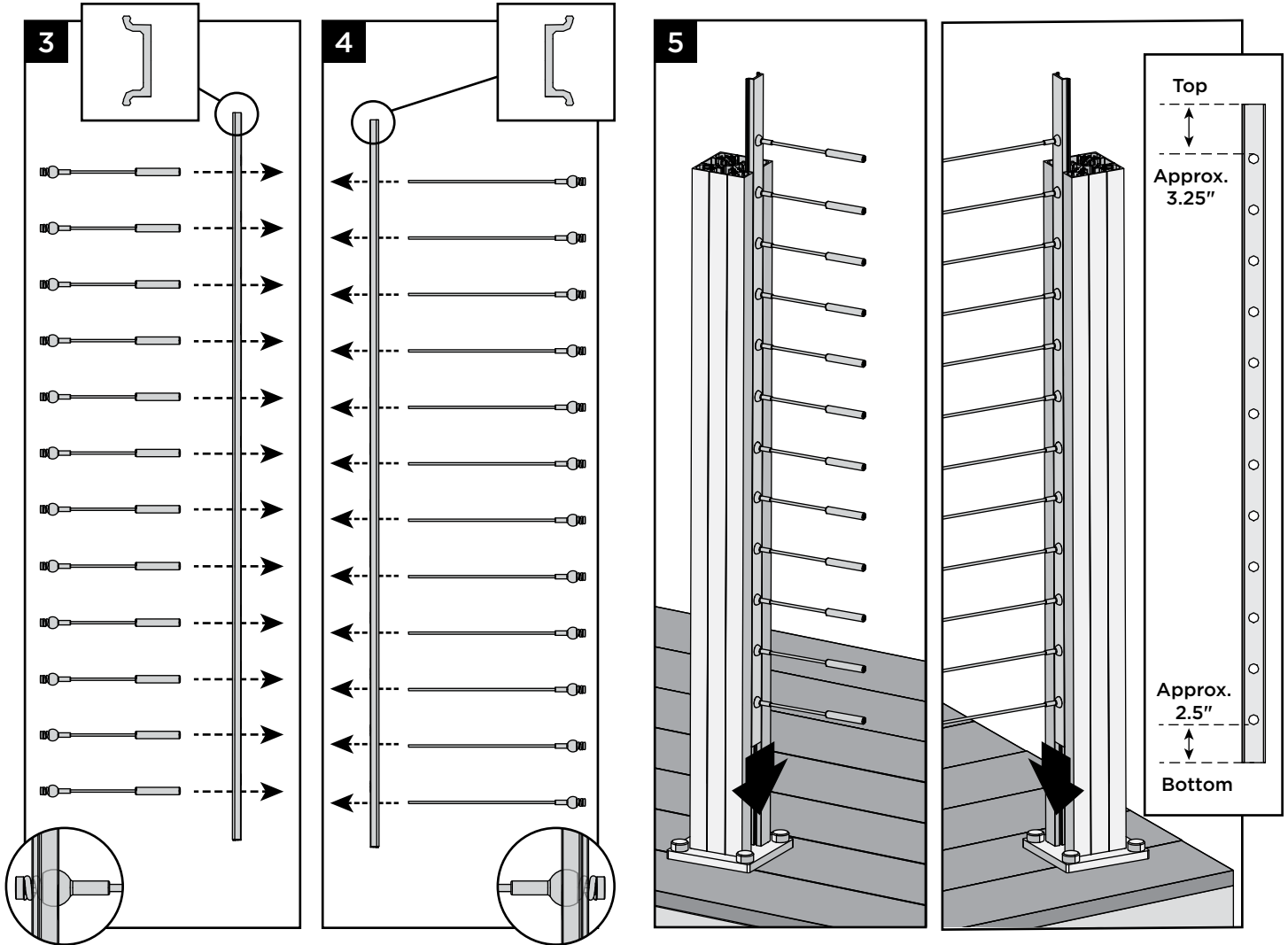
### Measuring and Cutting Top Rails (When Required)



2. Measure each span separately. Do not assume all top rails will be identical in length.

**NOTE: IF INSTALLING HORIZONTAL RAILS AT AN ANGLE, USE COMPOUND SWIVEL BRACKETS AND REFER TO INSTRUCTIONS AT THE END OF THIS DOCUMENT.**

## Inserting Cables into Cable Infill Adapters



3. Insert short cables into cable infill adapter as shown.
4. Insert long cables into opposite cable infill adapter as shown.

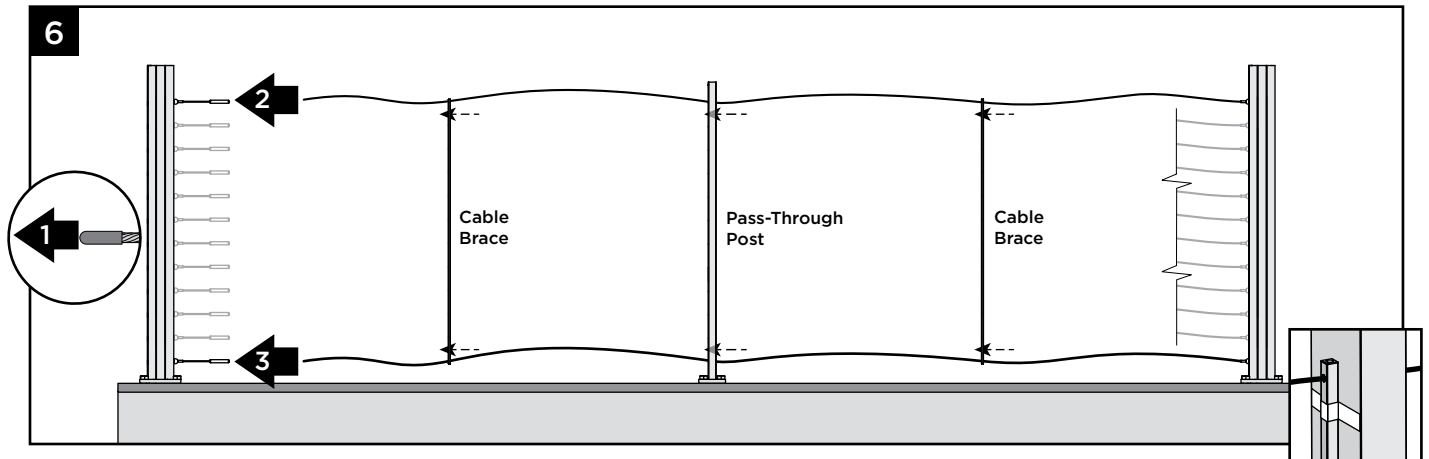
5. Slide cable infill adapters into X-Series Anchor Posts as shown.

**IMPORTANT:** Cable infill adapter should be inserted so that the hole closest to the end is at the bottom of the post. See dimensioned figure above to identify correct orientation of cable infill adapter.

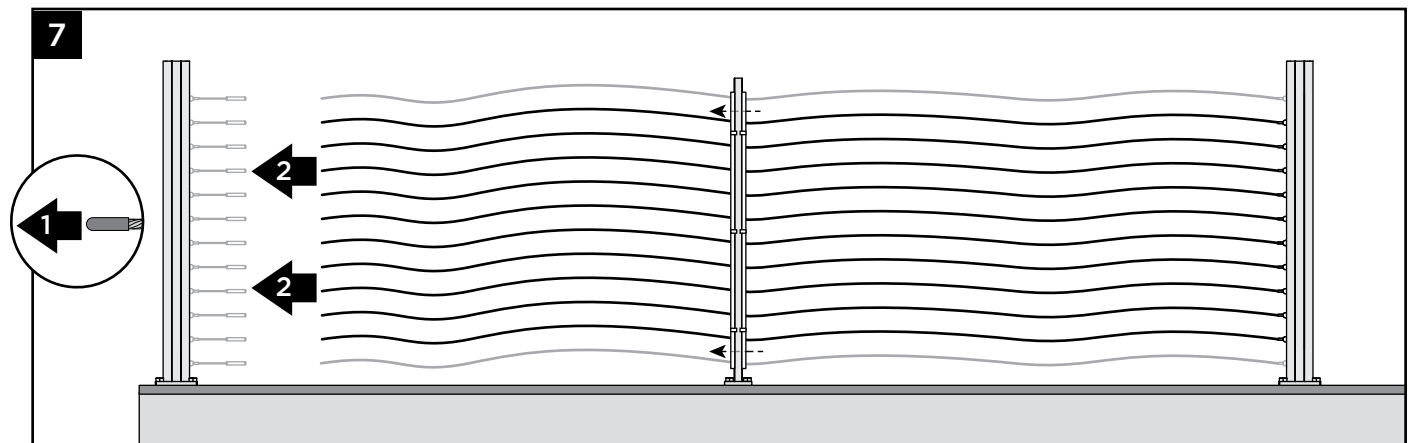
# TREX SIGNATURE® X-SERIES™ HORIZONTAL CABLE RAIL

## Installation Instructions

### Threading Long Cables Through Cable Brace(s) and Pass-Through Post(s)



6. Remove cover on end of cable. Thread the top cable through the top hole in the cable brace. Continue to thread this same cable through the top hole in the Pass-Through Post (when required). If you have multiple spans, continue in this fashion. Next, thread the bottom cable in the same manner. After installing the top and bottom cables, slide the cable brace next to the Pass-Through Post. **Tip:** Tape cable brace to Pass-Through Post for easier installation of remaining cables.



7. Remove remaining cable covers and thread remaining cables through cable brace(s) and Pass-Through Post(s).

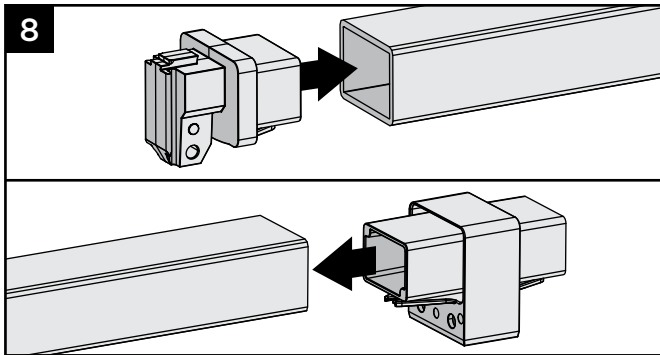
6

Have Questions?  
1-800-BUY-TREX

*NOTE: Construction methods are always improving. Please ensure you have the most up-to-date installation instructions by visiting: [trex.com](http://trex.com)*

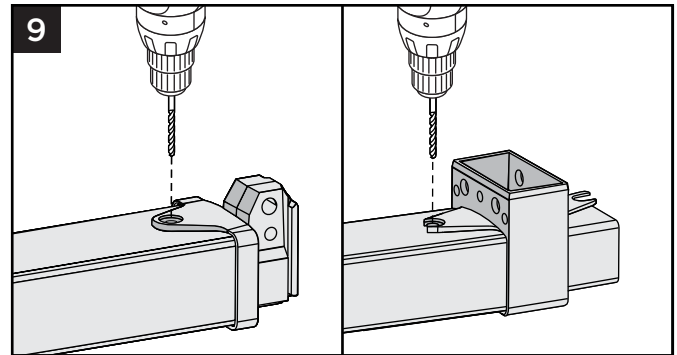
XSHZC-0424

## Inserting Brackets onto Top Rails



8. Insert all brackets as per steps 10a through 10c. Ensure that all brackets are fully seated.

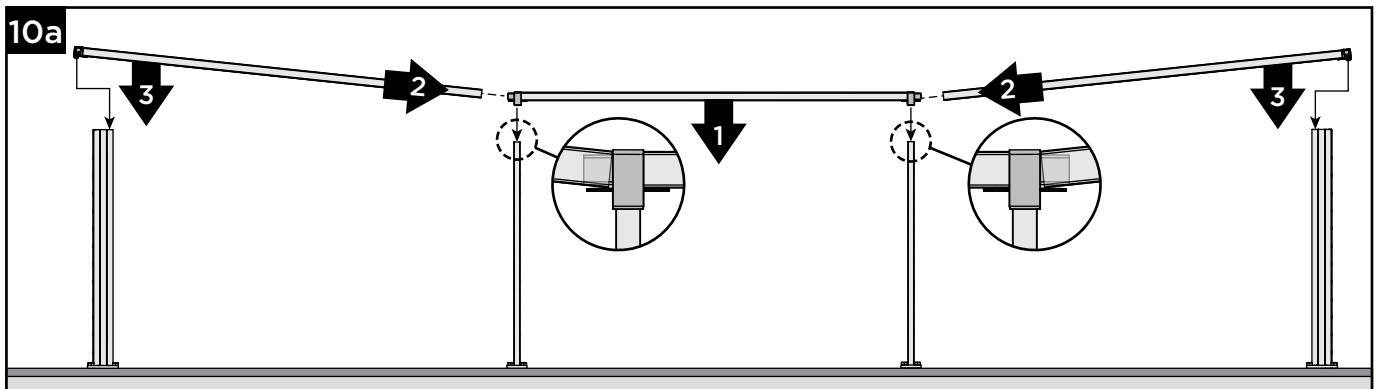
## Pre-Drilling Top Rails at Bracket Locations



9. Using a 9/64" drill bit, pre-drill at all bracket locations as shown.

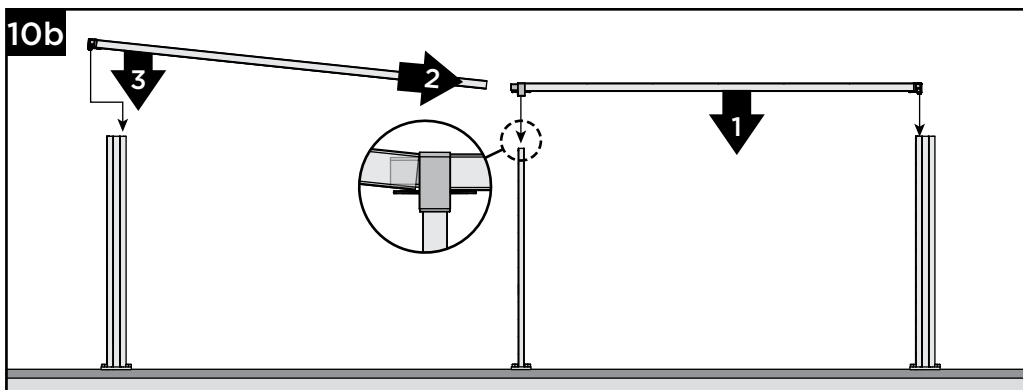
**Note:** Only pre-drill through the first layer of the rail and bracket.

## Installing Top Rails and Brackets onto Posts



**Note:** Cables removed from image above for clarity.

10a. For 18' spans (or spans that have 3 top rails), install center rail onto Pass-Through Posts first, then install outer rails on each side.

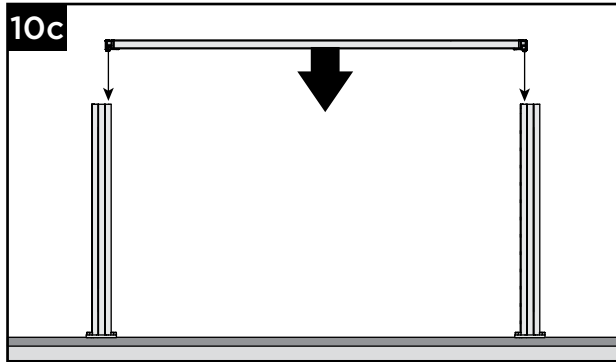


**Note:** Cables removed from image above for clarity.

10b. For 12' spans (or spans that have 2 top rails), install first rail onto X-Series Anchor Post and Pass-Through Post, then install remaining rail.

# TREX SIGNATURE® X-SERIES™ HORIZONTAL CABLE RAIL

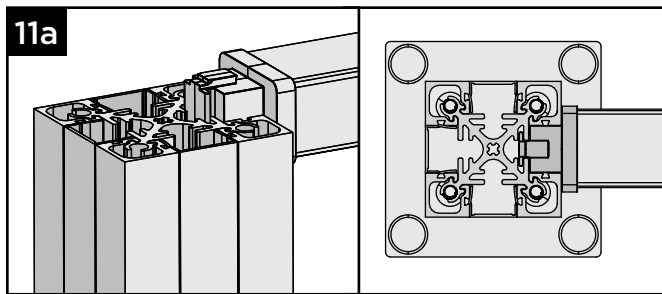
## Installation Instructions



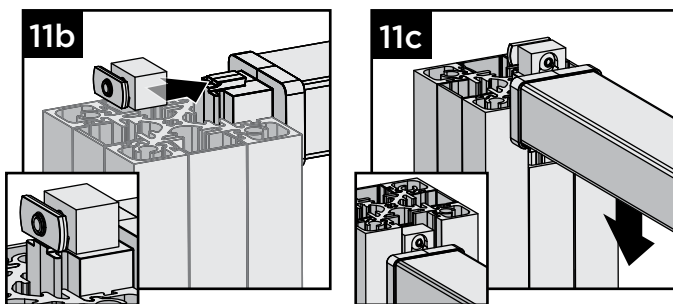
*Note: Cables removed from image above for clarity.*

10c. For 6' spans (or spans that have 1 top rail), install rail onto both X-Series Anchor Posts.

### Installing Top Rail Straight Brackets in X-Series Anchor Posts



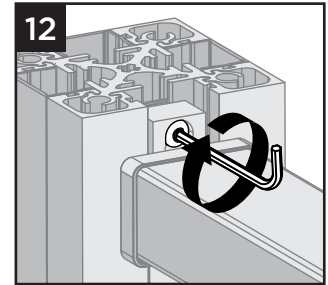
11a. Position the top rail straight bracket PARTIALLY into the X-Series Anchor Post as shown.



11b. Slide the top rail locking assembly onto the dovetail on the top of the bracket.

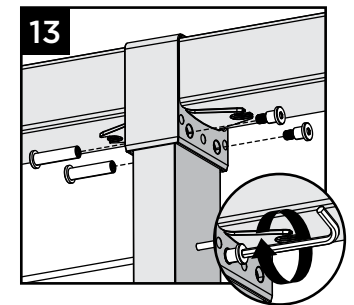
11c. Slide the bracket down until it sits on the cable infill adapter. Note that the screw in the locking assembly may need to be loosened to allow the locking assembly to fit properly in the X-Series Anchor Post.

12. Tighten screw in locking assembly using a 5/32" Allen wrench.

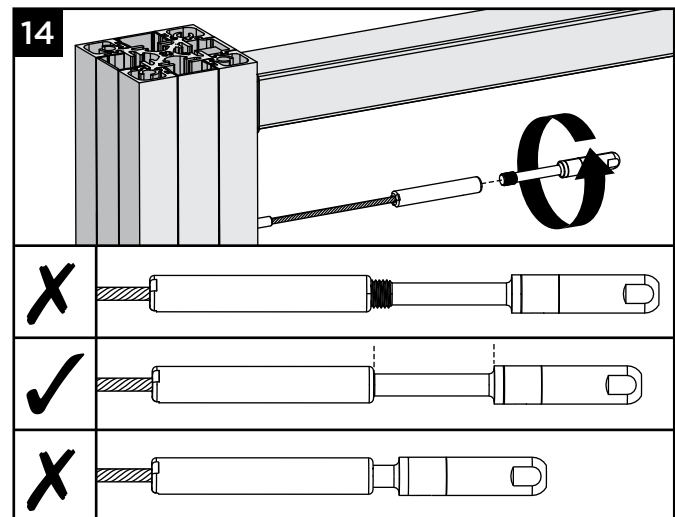


### Fastening Pass-Through Post Bracket to Pass-Through Post (When Required)

13. Install two barrel bolts through Pass-Through Post as shown. Insert screw on opposite side and tighten using a 1/8" Allen wrench.



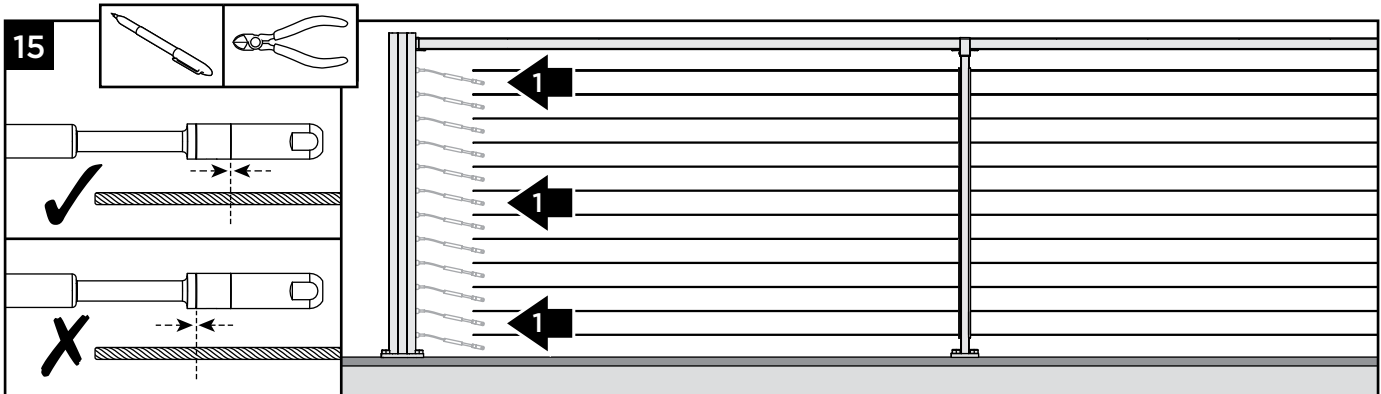
### Threading Push-to-Connect Fittings into Turnbuckles



14. Thread each push-to-connect (PTC) fitting into the turnbuckle on each short cable until the threads just disappear in the turnbuckle. Ensure threads are flush with the end of the turnbuckle.



## Cutting Long Cables (Safety Note: Wear safety glasses when cutting cables.)



15. Pull each long cable taut and straight by hand and mark cable at cut line on PTC fitting as shown. Cut each long cable on mark using cable cutters.

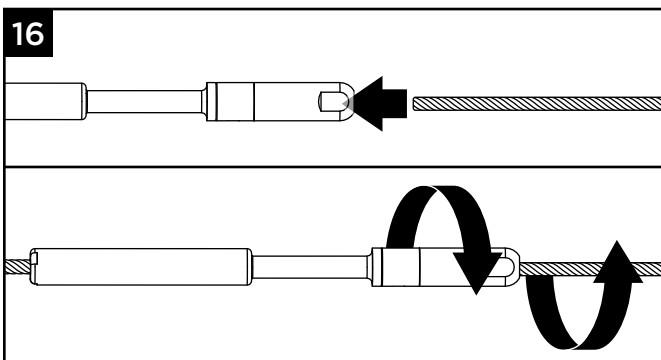
### NOTES:

- » BE SURE TO USE GOOD CABLE CUTTERS. DO NOT FRAY CABLE ENDS.
- » THIS APPLICATION MAY REQUIRE TWO PEOPLE IN ORDER TO PULL CABLE TAUT AND CUT.

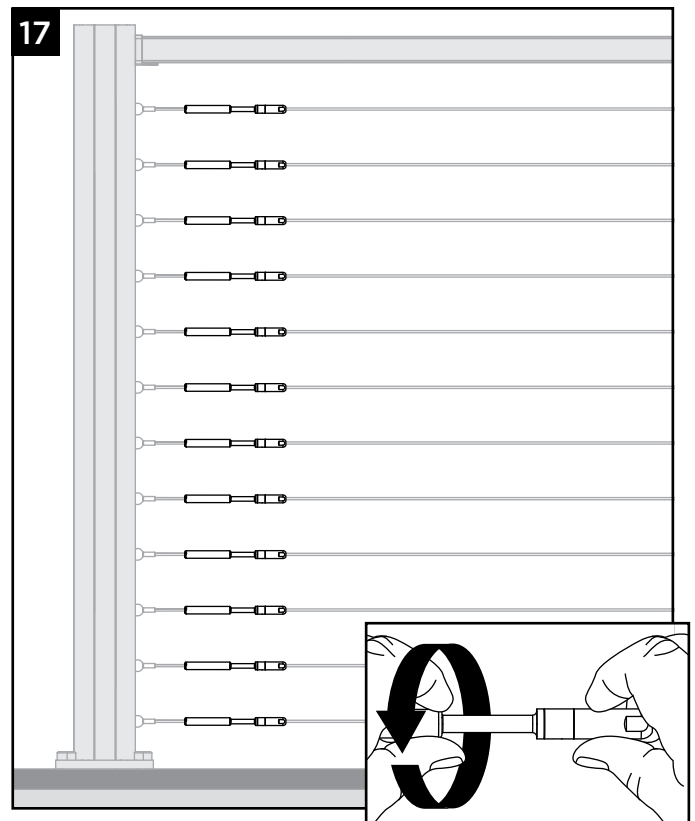
## Installing Long Cables into Push-to-Connect Fittings and Tensioning Cables

### IMPORTANT NOTE:

- » If installing X-Series Cable Rail near saltwater environments, spray a small amount of WD-40 Specialist® Corrosion Inhibitor in the open end of the PTC fitting before inserting the cable. Do this IMMEDIATELY before inserting the cable to prevent dirt and dust from collecting inside the fitting. Use caution not to get this on the decking surface! Protect decking from drips and runs.



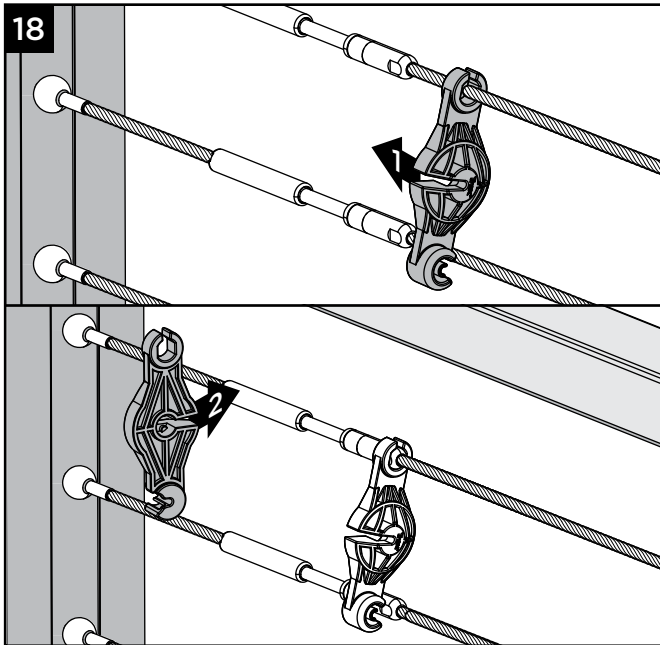
16. Push the end of each long cable into opposite PTC fitting, slightly rotating the PTC fitting counterclockwise and cable clockwise (approximately 1/4 turn) until cable is fully seated.



17. Hand-tighten all cables by holding the PTC fitting fixed and rotating the turnbuckle. Do NOT rotate PTC fitting when tightening cables.

# TREX SIGNATURE® X-SERIES™ HORIZONTAL CABLE RAIL

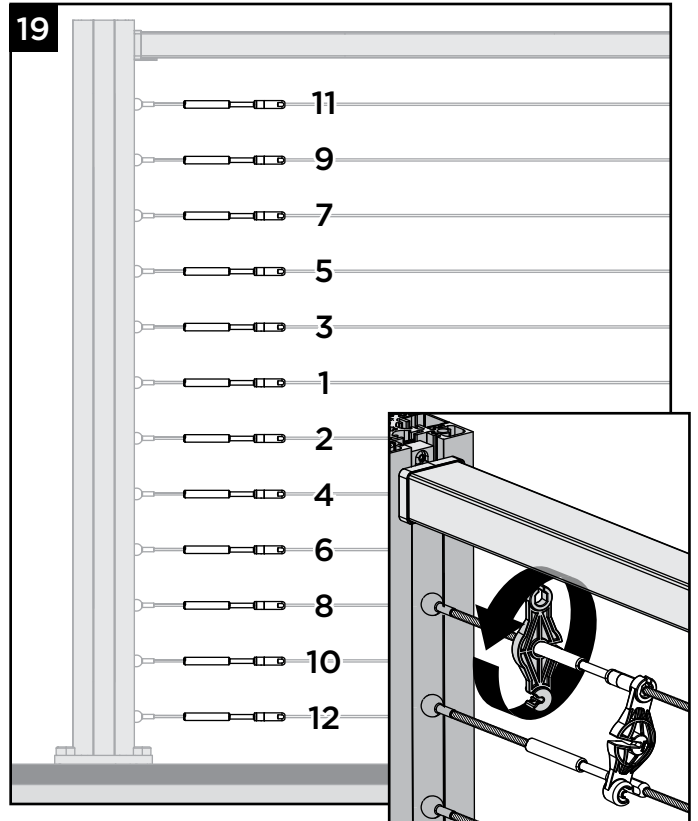
## Installation Instructions



18. Using the turnbuckle wrench(es) provided (one per kit), place one wrench on the flat sides of the PTC fitting. Place a second wrench on the turnbuckle as shown so that it locks in place with the cutouts on the end of the turnbuckle.

**Note:**

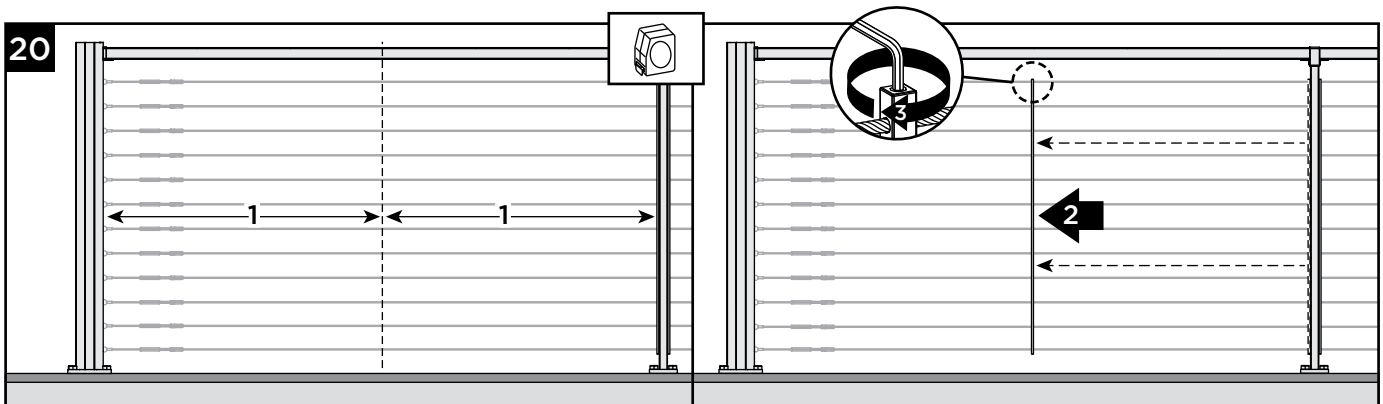
- » An adjustable wrench can also be used on the flat sides of the PTC fitting.
- » Use the release tool on the turnbuckle wrench to release the cable from the PTC fitting if needed. PTC fittings are intended to be single use after the cable has been tensioned. Do NOT reuse PTC fittings after tensioning.



19. Tension each cable to 100 lbs by rotating the turnbuckle-side wrench. Do NOT rotate PTC fitting when tensioning cables. Tension cables from the center outward, following the sequence shown. Repeat sequence as necessary until all cables are fully tensioned.

**Note:** 42" rail height (with 12 cables) shown here.

### Centering Cable Brace(s)



20. Locate the center of each span and slide all cable braces to their center positions. Ensure that cable braces are straight/vertical, and then tighten both top and bottom set screws using a 3/32" Allen wrench.

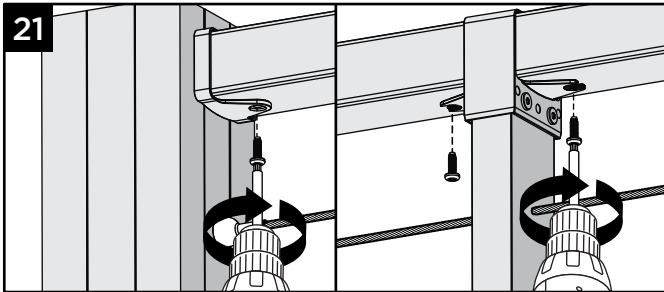
10

Have Questions?  
1-800-BUY-TREX

**NOTE:** Construction methods are always improving. Please ensure you have the most up-to-date installation instructions by visiting: [trex.com](http://trex.com)

XSHZC-0424

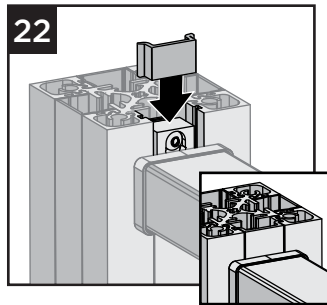
## Fastening Top Rails to Brackets



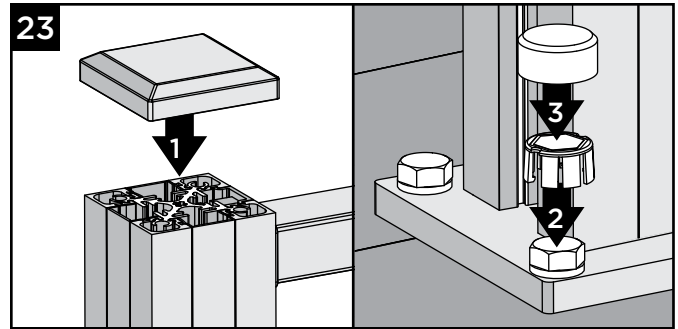
21. Install #8 x 1/2" screws into pre-drilled holes in top rails to fasten top rails to brackets at each Pass-Through Post and X-Series Anchor Post.

### Installing Top Inserts

22. Install top inserts into the open channel above each bracket in all X-Series Anchor Posts.



## Final Installation Steps

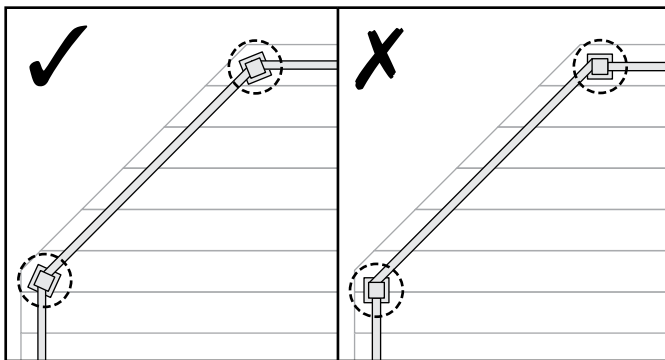


23. Install post caps and bolt caps to complete installation. For bolt caps, align hex shadow line on inner cap with bolt head before installing outer cap.

## Installing Horizontal Cable Rail on an Angle

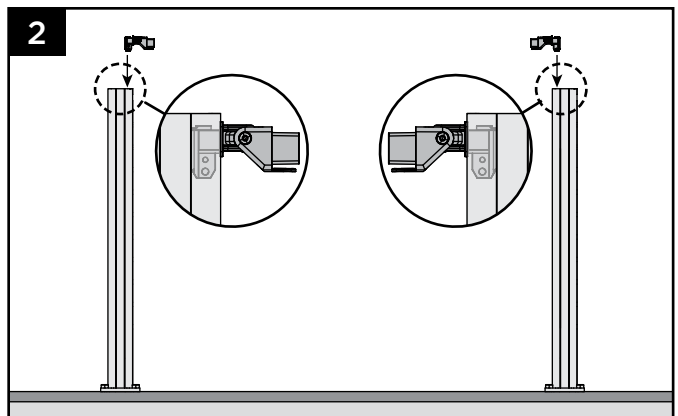
### NOTES:

- » *COMPOUND SWIVEL BRACKETS (SOLD SEPARATELY) AND CABLES CAN ACCOMMODATE UP TO A 22.5° ANGLE FOR HORIZONTAL APPLICATIONS.*
- » *FOR LARGER ANGLES, POSTS MUST BE ANGLED ACCORDINGLY. EXAMPLE BELOW IS FOR A 45° ANGLE.*



1. Follow all instructions as previously stated for standard horizontal installation EXCEPT for where noted below.

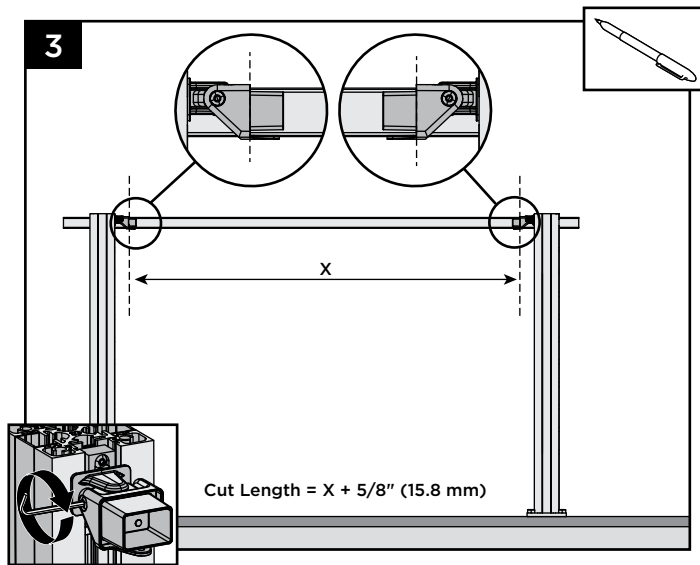
### Measuring and Cutting Top Rails



2. Temporarily slide compound swivel bracket(s) into X-Series Anchor Posts.

# TREX SIGNATURE® X-SERIES™ HORIZONTAL CABLE RAIL

## Installation Instructions



4. Complete the remainder of the installation following the steps previously outlined. After installation is complete, tighten all screws in each compound swivel bracket using a 5/32" Allen wrench.

3. Adjust each compound swivel bracket to align with direction of top rail and hand-tighten screws using a 5/32" Allen wrench to temporarily stabilize the swivel bracket. Measure between brackets at location shown, add 5/8" (15.8 mm) and cut top rail to this length.
-